



*Preserving Carbondale's Natural Areas*

# Green Earth News

Volume 31, No. 1, Spring 2017

Green Earth, Inc.  
P. O. Box 441  
Carbondale, IL 62903-0441

[www.GreenEarthinc.org](http://www.GreenEarthinc.org)



[facebook.com/GreenEarthInc](https://facebook.com/GreenEarthInc)



[twitter.com/GreenEarth\\_Inc](https://twitter.com/GreenEarth_Inc)

## Board of Directors

Beth Fisher, *President*  
Nathan Speagle, *Vice President*  
Wenona Whitfield, *Secretary*  
Keith Beyler, *Treasurer*  
David Gibson, Patricia Justice,  
George Manning, Judy Martinko,  
Ken Mayberry, Dorcy Prosser,  
Becca Tally, Laurel Toussaint.

## Executive Director

Stephanie Eichholz,  
[director@greenearthinc.org](mailto:director@greenearthinc.org)  
(618) 201-3774

## Trail Adopters

### Brush Hill

Mike & Chris Long

### Oakland

NeuroRestorative  
CUF Youth Group

### Chautauqua Bottoms

Bob & Janel Taylor  
Dorcy Prosser & Jan Weiss  
Ken Mayberry

### Fernlands

Nathan Speagle

### Pyles Fork

SIUC Geography Club

## Green Earth, Inc.

is a 501(c)3 not-for-profit  
organization established in 1974.

Green Earth's mission is to  
acquire and preserve natural  
areas in the vicinity of  
Carbondale, Illinois, and provide  
access for public enjoyment and  
education.

We strive to preserve these areas  
for future generations, and  
encourage public input and  
participation for these objectives.

## Help Us Fight Invasives at Brush Hill and Fernlands

Last fall we informed our readers that the Illinois Clean Energy Community Foundation (ICECF) invited GE to take on a second 3:1 Challenge Grant to raise money for habitat management on our Brush Hill and Fernlands preserves. We have almost reached our fundraising goal.

We need to raise just \$1,630 more. Will you help us?

To make a donation, you can:

- use the form on the back page of this newsletter
- go online to [greenearthinc.org](http://greenearthinc.org) and look for the special donation button on the home page

\$4,000 Goal

\$2,370  
raised

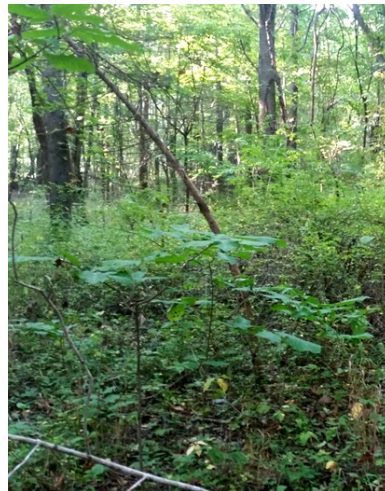


\$1,630  
to go!

This grant makes the most of your donation because the ICECF will match every one of your dollars with three more! At the end of our fundraising campaign we will have \$16,000 for habitat management - something we always need help with. All of our properties have infestations of invasive plant species at some level.

Without large scale intervention it can be nearly impossible to get the upper hand when battling these invasives. We are thrilled to be able to work with Long Forestry Consultation and Ozark Koala Ecosystem Services on this effort.

Thank you in advance for your support!



*Before & After photos  
of Oakland understory  
from 2015-2016.*

*Photo depicts the  
removal of multiflora  
rose, bush honeysuckle  
and vine honeysuckle  
from the understory.  
Work was performed  
with funds raised  
during GE's first  
Challenge Grant.*

*Photo courtesy of Long  
Forestry Consultation*



## President's Corner

Beth Fisher,  
beth.bfisher@verizon.net

It's a new year and Green Earth has launched a newly designed website and blog. Please be sure to check them out! The blog will be a great way to share information about Green Earth news and the natural history of our preserves. We welcome guest posts, so if you have a story about your experiences on GE preserves, or interesting information about the flora and fauna found there, please write to us. And if you're not already following us on Facebook or Twitter, they are a fantastic way to keep up with what's going on at GE. You'll find amazing sound clips of frog choruses, photos of wildlife and wildflowers (yes, the flowers already started appearing in February!), and announcements about GE activities including workdays, community events, and fundraisers. We hope what you see and read in our social media posts will inspire you to go take a hike and explore nature in your community.

## Green Earth is Pleased to Welcome New Board Member: Becca Tally

Becca Tally joined Green Earth's board of directors this past winter. Becca, who holds a degree in Geography/Environmental Resources from SIUC, she said she was drawn to Southern Illinois for the region's natural areas. Becca began volunteering with Green Earth in 2015 and stated she has "enjoyed getting to know and work beside this amazing group of people." Becca also stated that she is "honored to be able to serve on the board and to support Green Earth's mission." Becca's enthusiasm in tackling projects and her determination to make a difference makes her an exceptional addition to the GE board.

## New Adopters for Oakland's Stan Harris Trail

We are pleased to announce that Oakland's Stan Harris Trail has been adopted after an extended stretch of time in foster care. The Youth Group of Carbondale Unitarian Fellowship will be taking on the job of caring for this trail. The CUF, with their philosophy of service, has reached out to us many times over the years to hold volunteer workdays. We were delighted when they expressed interest in adopting this trail - a trail named after one of GE's founding board members and CUF member Stan Harris. What a lovely tribute to Stan!

## Thanks To Our Recent Contributors. We Couldn't Exist Without Your Support!

*Donations list for fall and winter 2015/2016*

### \$500+

Kassy Simonds.

### \$200 - \$499

Jan & Robert Weiss, Dorothy Speagle,  
Jacquie & Fred Betz,  
Mary & John McKillip.

### \$100 - \$199

William C. Ashby, Stan & Leslie Curtis,  
Janet & Andrew Ernest,  
Barbara Eichholz, Sylvia Greenfield,  
Carolyn & Christian Moe,  
Carolyn & John Hooker,  
Marion & Marvin Kleinau,  
Anne Gaylord & Don Monty,  
Deanna & Mike Olexia, Jack Parker,  
Dorcy & Don Prosser,  
Mary O'hara & Tom Redmond,  
Emma Jean & Mike Durr,  
Ruth & Thomas Roy, Laraine Wright,  
Patricia Justice, Lisa McClure\*,  
Dorothy Rudoni, Russ Cerocke,  
Evergreen Garden Study Club.

### \$50 - \$99

Katherine & George Black,  
Betsy & Andy Brown,  
Abigail & Daniel Cook,  
Neil Foland, Charles Howe,  
Barbara & Patrick Hewson,  
Grant Justice\*, Linda Mathias,  
Pat Eckert & Jerry Molumby,  
Betty & Roland Person,  
Regina & Roger Pfister, Don Kurz,  
Janneke & Robert Resnick,  
Imogene Beckemeyer.

### \$5 - \$49

Lane & Joe Hudgins, Becca Tally,  
Michael Alderfer, Michael McNerney,  
Jim & Kathy Booziotis, Sandy Gobert,  
Jack & Kelley Hessian, Gregory Kupiec,  
Mary Mantovani, Eugene Timpe,  
Dorthy & Arnold Ulner.

*\* Donations made in Honor of  
Patricia Justice*

### Monthly Contributors

Sally Bennet Mercurio,  
Craig & Janice Hinde,  
John & Sara Hinde,  
Nancy Nowak, Lisa Thomas,  
Steve Gough & Katherine Poulos,  
Beth & Derek Fisher,  
Wenona Whitfield.

### eScrip Contributors

Laura Basanta, Kristy Bender,  
Barbara Eichholz,  
Mike & Stephanie Eichholz,  
Sara Eynon, Beth Fisher,  
David Gibson, Beth Malmquist,  
Jan Hinde, Judy Lewis,  
Judy Martinko, Ken Mayberry,  
Nancy Miller, Mary O'hara,  
Moe Phemister, Katherine Poulos,  
Alison Quick, Tom Redmond,  
Allison Ribley, Suzanne Schmitz,  
Nathan Speagle, Laurel Toussaint,  
Wenona Whitfield.



## Don't miss our Spring Plant Sale:

Green Earth is partnering with Illinois Native Plant Society once again to hold our spring plant sale fundraiser. By shopping our sale you will be supporting two worthy nonprofits that work to improve our local ecology.

## Why Shop for Native Plants?

Because native plants evolved in this climate, they require less supplemental food or water and less maintenance to stay healthy. They are also hardier and can withstand our extreme winter and summer conditions when many imported horticultural species found in the majority of commercial nurseries succumb to the harsh conditions.

Planting natives can not only save you time and money, they also improve the ecology of your neighborhood. Most cityscapes and residential neighborhoods are a food desert for our indigenous wildlife. Exotic horticultural plants did not evolve locally in concert with our native insect populations and are unable to support their diet and habitat needs. Without our native plants, we don't have native insects – which our birds, amphibians, reptiles, and mammals depend on. It's an ecosystem out of balance.

Just a handful of years ago finding native plants was very difficult. But the native plant movement is growing. We can all do our part by adding natives to our yards -together we can have a large impact!

Visit the blog page of GE's website to learn more about the benefits of landscaping with natives from guest blogger Chris Benda, Plant Ecologist with the Illinois Natural History Survey and President of INPS.



# Native Plant Sale

April 1<sup>st</sup>, 2017  
8:00am to 2:00pm

Sale will occur outside at  
**John A. Logan College in Carterville, IL**  
**Building H - Workforce Development**  
in conjunction with the Illinois Indigenous Plants Symposium  
(admission to the plant sale is free)



## GE to Host Illinois RiverWatch Training Event

The National Great Rivers Research and Education Center (NGRREC) is a collaborative partnership that is dedicated to the study the ecology of big rivers, the workings of the watersheds that feed them, and the ties to the river communities that use them. The NGRREC does this in part through the Illinois RiverWatch program which safeguards the future of Illinois rivers and streams through stewardship, education and sound science. RiverWatch utilizes trained volunteers to collect quality assured data on wadeable streams and fosters coordination among groups involved in similar monitoring efforts.

Illinois RiverWatch seeks to engage Illinois adults to participate in the stream monitoring. Each year at adopted stream sites in their communities, trained volunteers conduct habitat and biological surveys, including the collection and identification of macroinvertebrates that serve as bioindicators of water quality. The program strives to collect consistent, high-quality data on the conditions of local streams and provide citizens with a hands-on opportunity to be better stewards of our watersheds.

Illinois RiverWatch will be at SIU Carbondale April 1<sup>st</sup> to offer this training, and they will hold the outdoor portion of this workshop at Green Earth's Chautauqua Bottoms. Anyone interested in attending this workshop can visit our website for a link to the RiverWatch registration page. As an added bonus to GE supporters, the first five to sign up using a GE discount code can receive 60% off the registration fee - simply type the discount code GREENEARTH upon checking out.

## Mail-in Donation Form

☐ \$10 ☐ \$25 ☐ \$50 ☐ \$75 ☐ \$100 ☐ \$250 ☐ Other \_\_\_\_\_

☐ I prefer to NOT have my name listed as a donor in  
GE publications

☐ Use my donation for the 3:1 Challenge Grant

☐ Please direct my donation toward GE's general fund

☐ Please direct my donation toward GE's green fund

Name(s) \_\_\_\_\_

☐ Help us cut down cost and opt for GE newsletters via email

Address \_\_\_\_\_

Email \_\_\_\_\_

### Premiums

Gifts of \$10 or more:

☐ Please send me the *Invasive Species of Southern Illinois* Handbook

Gifts of \$25 or more:

☐ Please send me a gift box of GE Photo Note Cards

Gifts of \$35 or more:

☐ Please send me a Child Green Earth Shirt

circle one: short-sleeve long-sleeve

circle one: S M L

Gifts of \$50 or more:

☐ Please send me an Adult Green Earth Shirt

circle one: short-sleeve long-sleeve

circle one: S M L

## Ways to Give

### Check

Complete the information above and mail this form and  
your check to P.O. Box 441, Carbondale, IL 62903

### Online via Credit Card or PayPal

Visit the [greenearthinc.org](http://greenearthinc.org/donations) donations page

### Automatic Monthly Donations via Credit Card or PayPal

Visit the [greenearthinc.org](http://greenearthinc.org/donations) donations page

### Bank Account – Automatic Monthly Donations

Call Green Earth's Director at 618-201-3774 to get started

### Enroll in the Schnuck's eScrip Program

Visit [greenearthinc.org/escripprogram.htm](http://greenearthinc.org/escripprogram.htm) to learn how

### Estate Planning

Remember Green Earth in your will. Call 618-201-3774 or  
email [director@greenearthinc.org](mailto:director@greenearthinc.org)

### Stock Transfer

Call 618-201-3774 or email [director@greenearthinc.org](mailto:director@greenearthinc.org)

## GE's Upcoming Volunteer Workdays & Events!

Mar 18 Volunteer workday - Oakland, site maintenance

Mar 25 Volunteer workday - Pyles Fork, litter cleanup with  
Keep Carbondale Beautiful

Apr 1 Spring Plant Sale - John A Logan College

Apr 15 Volunteer workday - Chautauqua Bottoms, ISM

May 20 Volunteer workday - TBA

Locations subject to change based on site conditions & need.  
Check our website for rain dates, updates, and changes.

ISM = Invasive Species Management

TBA = To Be Announced

NONPROFIT ORG.  
U.S. Postage PAID  
Carbondale, IL  
Permit No. 05

This newsletter is printed on recycled paper  
Green Earth, Inc.  
P.O. Box 441  
Carbondale, IL 62903-0441  
Address Service Requested

